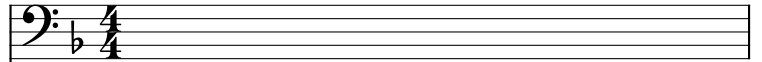


I dreamed a dream

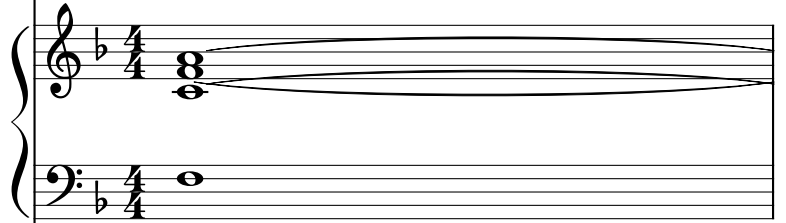
Claude-Michel Schönberg

$\text{♩} = 119$

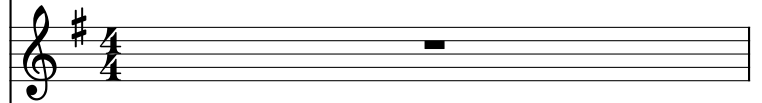
Contrebasses, String Ensemble 1



Synthétiseur d'instruments à cordes, Synth Strings 1



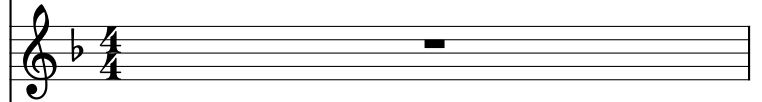
Clarinette en Sib



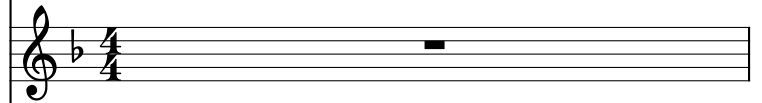
Violons, String Ensemble 1



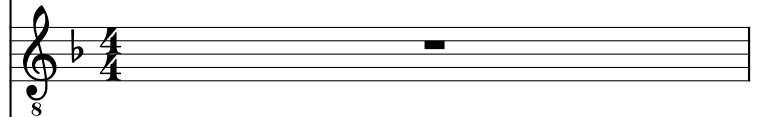
Cor en Fa, French Horn



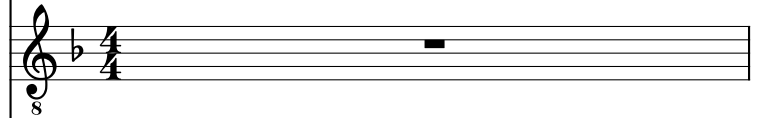
Cuivres, Brass Section



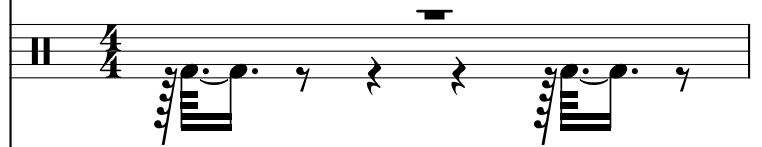
Guitare classique, Acoustic Guitar (nylon)



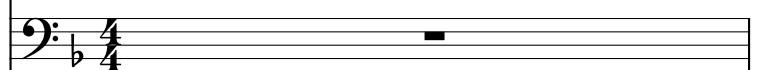
Guitare acoustique, Acoustic Guitar (steel)



Batterie



Basson, Bassoon



This musical score page, labeled '2', contains ten staves for various instruments. The top staff is for Cbs. (Cello), showing three whole notes: G2, F2, and E2. The Synth. (Synthesizer) part consists of two staves; the upper staff has a complex chordal texture with many notes, while the lower staff has three whole notes: G2, F2, and E2. The Clar. Sib (Clarinet in B-flat) staff has three whole rests. The Vlins. (Violins) staff has a rhythmic pattern of eighth notes: G4, A4, B4, C5, B4, A4, G4. The Cor Fa (Cor Anglais) staff has three whole rests. The Cui. (Cymbals) staff has three whole rests. The two Guit. (Guitar) staves have three whole rests, followed by a melodic line in the second measure of each staff: G4, A4, B4, C5, B4, A4, G4. The Bat. (Bass Drum) staff has a complex rhythmic pattern of eighth notes: G4, A4, B4, C5, B4, A4, G4. The Bsn. (Bassoon) staff has three whole rests.

Cbs.

Synth.

Clar. Sib

Vlins.

Cor Fa

Cui.

Guit.

Guit.

Bat.

Bsn.

Detailed description: This page of a musical score, numbered 5, features ten staves for different instruments. The Cbs. (Cello) staff is in bass clef with a key signature of one flat, showing three measures of whole notes. The Synth. (Synthesizer) part consists of two staves; the upper staff is in treble clef and the lower in bass clef, both with one flat, featuring complex chordal textures and a long sustained note in the final measure. The Clar. Sib (Clarinet in Si b) staff is in treble clef with a key signature of one sharp, mostly silent with some notes in the final measure. The Vlins. (Violins) staff is in treble clef with one flat, playing a steady eighth-note melody. The Cor Fa (Cor Anglais) and Cui. (Corno) staves are in treble clef with one flat and are mostly silent. The first Guit. (Guitar) staff is in treble clef with one flat, featuring a melodic line with a slur and a fermata. The second Guit. staff is in treble clef with one flat, playing a bass line with a triplet of eighth notes in the final measure. The Bat. (Bass Drum) staff uses a drum set icon and shows a complex rhythmic pattern. The Bsn. (Bassoon) staff is in bass clef with one flat and is mostly silent.

This musical score page, numbered 8, features ten staves for various instruments. The top staff is for Cbs. (Cello), showing three whole notes. The Synth. (Synthesizer) part consists of two staves with sustained chords. The Clar. Sib (Clarinet in B-flat) has a melodic line in the first measure. The Vlins. (Violins) play a steady eighth-note pattern. The Cor Fa (Cor Anglais), Cui. (Cymbals), Guit. (Guitars), and Bsn. (Bassoon) parts are mostly silent, indicated by rests. The Bat. (Bass Drum) part features a rhythmic pattern of eighth notes with accents.

This musical score page, numbered 11, features ten staves for different instruments. The Cbs. (Double Bass) staff has a bass clef and a key signature of one flat, with three whole notes. The Synth. (Synthesizer) staff has a grand staff with treble and bass clefs, one flat, and a long slur over two chords. The Clar. Sib (Clarinet in B-flat) staff has a treble clef, a key signature of one sharp, and a melodic line. The Vlins. (Violins) staff has a treble clef, one flat, and a melodic line. The Cor Fa (Trumpet in F) staff has a treble clef, one flat, and rests. The Cui. (Cymbals) staff has a treble clef, one flat, and rests. The Guit. (Guitar) staff has a treble clef, one flat, and a melodic line. The second Guit. staff has a treble clef, one flat, and rests. The Bat. (Drum) staff has a double bar line and a complex rhythmic pattern. The Bsn. (Bassoon) staff has a bass clef, one flat, and rests.

This musical score page contains ten staves for measures 14 and 15. The instruments and their parts are as follows:

- Cbs. (Cello):** Measure 14 has a whole note G2. Measure 15 has a whole note G2 with a *p* dynamic marking.
- Synth. (Synthesizer):** Measure 14 has a whole note chord of G2, B2, and D3. Measure 15 has a sustained chord of G2, B2, and D3.
- Clar. Sib (Clarinet in Bb):** Measure 14 has a whole rest. Measure 15 has a quarter rest, followed by quarter notes G4, A4, and B4.
- Vlins. (Violins):** Measure 14 has a quarter note G4. Measure 15 has a quarter note G4.
- Cor Fa (Cor Anglais):** Measure 14 has a whole rest. Measure 15 has a whole rest.
- Cui. (Cymbals):** Measure 14 has a whole rest. Measure 15 has a whole rest.
- Guit. (Guitar):** Measure 14 has a quarter note G4. Measure 15 has a quarter note G4.
- Guit. (Guitar):** Measure 14 has a quarter note G4. Measure 15 has a whole rest.
- Bat. (Bass Drum):** Measure 14 has a quarter note G4. Measure 15 has a quarter note G4.
- Bsn. (Bassoon):** Measure 14 has a whole rest. Measure 15 has a whole rest.

This musical score page, numbered 16, features ten staves for different instruments. The instruments are: Cbs. (Cello), Synth. (Synthesizer), Clar. Sib (Clarinet in B-flat), Vlins. (Violins), Cor Fa (Cor Anglais), Cui. (Cymbals), Guit. (Guitar), Guit. (Guitar), Bat. (Bass Drum), and Bsn. (Bassoon). The Cbs. staff has a treble clef and a key signature of one flat, with a fermata over a whole note in the first measure and a whole note in the second. The Synth. staff has a grand staff with a treble clef and a key signature of one flat, with a fermata over a whole note in the first measure and a whole note in the second. The Clar. Sib staff has a treble clef and a key signature of one sharp, with a quarter note, an eighth note, and a quarter note in the first measure, and a whole note in the second. The Vlins. staff has a treble clef and a key signature of one flat, with a quarter note, a half note, and a quarter note in the first measure, and a quarter note, a half note, and a quarter note in the second. The Cor Fa, Cui., Guit., and Guit. staves have a treble clef and a key signature of one flat, with a whole rest in the first measure and a whole rest in the second. The Bat. staff has a double bar line in the first measure, followed by a quarter note, a quarter note, and a quarter note in the first measure, and a quarter note, a quarter note, and a quarter note in the second. The Bsn. staff has a bass clef and a key signature of one flat, with a whole rest in the first measure and a whole rest in the second.

This musical score page, numbered 18, features ten staves for various instruments. The instruments are: Cbs. (Cello), Synth. (Synthesizer), Clar. Sib (Clarinet in B-flat), Vlins. (Violins), Cor Fa (Cor Anglais), Cui. (Cymbals), Guit. (Guitar), Guit. (Guitar), Bat. (Bass Drum), and Bsn. (Bassoon). The score is written in a key signature of one flat (B-flat) and a common time signature. The Cbs. staff has a whole note in the first measure and a whole note in the second. The Synth. staff has a chord in the first measure, a whole note in the second, and a sustained chord in the third. The Clar. Sib staff has a whole rest in the first measure and a quarter note in the second. The Vlins. staff has a quarter note in the first measure and a quarter note in the second. The Cor Fa staff has a whole rest in the first measure and a whole rest in the second. The Cui. staff has a whole rest in the first measure and a whole rest in the second. The Guit. staff has a whole rest in the first measure and a quarter note in the second. The Guit. staff has a whole rest in the first measure and a whole rest in the second. The Bat. staff has a drumstick icon in the first measure and a drumstick icon in the second. The Bsn. staff has a whole rest in the first measure and a whole rest in the second.

Cbs.

Synth.

Clar. Sib

Vlins.

Cor Fa

Cui.

Guit.

Guit.

Bat.

Bsn.

Detailed description: This page of a musical score, numbered 20, contains ten staves for different instruments. The Cbs. (Cello) staff has a bass clef and a flat key signature, with a whole note in the first measure and a whole rest in the second. The Synth. (Synthesizer) staff has a grand staff with treble and bass clefs, a flat key signature, and chords in both staves in the first measure, with a whole rest in the second. The Clar. Sib (Clarinet in Si b) staff has a treble clef, a sharp key signature, and a melodic line with eighth and quarter notes. The Vlins. (Violins) staff has a treble clef, a flat key signature, and a melodic line with quarter and eighth notes. The Cor Fa (Cor Anglais) staff has a treble clef, a flat key signature, and rests in both measures. The Cui. (Cui) staff has a treble clef, a flat key signature, and rests in both measures. The Guit. (Guitar) staff has a treble clef, a flat key signature, and rests in the first measure, followed by a melodic line in the second measure. The second Guit. staff has a treble clef, a flat key signature, and rests in both measures. The Bat. (Bass Drum) staff has a double bar line at the start, followed by a rhythmic pattern of eighth notes and rests. The Bsn. (Bassoon) staff has a bass clef, a flat key signature, and rests in both measures.

Musical score for page 22, featuring the following instruments and parts:

- Cbs. (Cello):** Bass clef, one note at the beginning.
- Synth. (Synthesizer):** Treble and Bass clefs, chords and notes.
- Clar. Sib (Clarinet in Bb):** Treble clef, one note at the beginning.
- Vlins. (Violins):** Treble clef, two notes.
- Cor Fa (Cor Anglais):** Treble clef, one note at the beginning.
- Cui. (Cymbals):** Treble clef, one note at the beginning.
- Guit. (Guitar):** Treble clef, eighth notes with fret numbers (8, 7).
- Guit. (Guitar):** Treble clef, one note at the beginning.
- Bat. (Bass Drum):** Drum clef, rhythmic notation.
- Bsn. (Bassoon):** Bass clef, one note at the beginning.



The musical score for page 23 consists of ten staves, each representing a different instrument or section. The instruments are labeled on the left side of the page: Cbs., Synth., Clar. Sib, Vlins., Cor Fa, Cui., Guit., Guit., Bat., and Bsn. The score is written in a key signature of one flat (B-flat) and a common time signature (C). The Cbs. staff begins with a dynamic marking of *p*. The Synth. staff is divided into two parts, with the upper part in treble clef and the lower part in bass clef. The Clar. Sib staff is in treble clef with a key signature of one sharp (F#). The Vlins. staff is in treble clef. The Cor Fa and Cui. staves are in treble clef. The two Guit. staves are in treble clef. The Bat. staff is in common time. The Bsn. staff is in bass clef. The score includes various musical notations such as notes, rests, slurs, and dynamic markings.



Cbs.

Synth.

Clar. Sib

Vlns.

Cor Fa

Cui.

Guit.

Guit.

Bat.

Bsn.

This musical score page, numbered 25, features ten staves for different instruments. The Cbs. (Cello) staff has a bass clef and a flat key signature, with a whole note chord in the first measure and a whole note chord in the second. The Synth. (Synthesizer) staff has a grand staff with treble and bass clefs and a flat key signature, with a whole note chord in the first measure and a whole note chord in the second. The Clar. Sib (Clarinet in B-flat) staff has a treble clef and a sharp key signature, with a whole note chord in the first measure and a whole note chord in the second. The Vlins. (Violins) staff has a treble clef and a flat key signature, with a series of eighth notes in the first measure and a series of eighth notes in the second. The Cor Fa (Cor Anglais) staff has a treble clef and a flat key signature, with a whole note chord in the first measure and a whole note chord in the second. The Cui. (Cymbals) staff has a treble clef and a flat key signature, with a whole note chord in the first measure and a whole note chord in the second. The Guit. (Guitar) staff has a treble clef and a flat key signature, with a whole note chord in the first measure and a whole note chord in the second. The Bat. (Bass Drum) staff has a double bar line and a flat key signature, with a series of eighth notes in the first measure and a series of eighth notes in the second. The Bsn. (Bassoon) staff has a bass clef and a flat key signature, with a whole note chord in the first measure and a whole note chord in the second.

This musical score page, numbered 27, contains ten staves for various instruments. The instruments are: Cbs. (Cello), Synth. (Synthesizer), Clar. Sib (Clarinet in B-flat), Vlins. (Violins), Cor Fa (Cor Anglais), Cui. (Cymbals), Guit. (Guitar), Bat. (Bass Drum), and Bsn. (Bassoon). The Cbs. and Synth. staves are grouped together with a brace. The Clar. Sib staff is in G major. The Vlins., Cor Fa, Cui., and Bsn. staves are in B-flat major. The Guit. staves are in B-flat major. The Bat. staff is in common time. The score shows a variety of musical notations, including whole notes, quarter notes, eighth notes, and rests, as well as dynamic markings and articulation symbols.

This musical score page, numbered 28, features ten staves for various instruments. The instruments are: Cbs. (Cello), Synth. (Synthesizer), Clar. Sib (Clarinet in B-flat), Vlins. (Violins), Cor Fa (Cor Anglais), Cui. (Cymbals), Guit. (Guitar), Bat. (Bass Drum), and Bsn. (Bassoon). The Cbs. staff has a single whole note in the first measure. The Synth. staff has a complex texture with multiple notes and rests. The Clar. Sib staff has a melodic line with eighth and quarter notes. The Vlins. staff has a simple melodic line. The Cor Fa, Cui., and Bsn. staves have rests. The Guit. staves have a melodic line with a slur and a tremolo effect. The Bat. staff has a complex rhythmic pattern with many rests and accents.

This musical score page, numbered 30, features ten staves for various instruments. The top staff is for Cbs. (Double Bass), starting with a whole note G2 and a half note G2. The Synth. (Synthesizer) staff consists of two staves; the upper staff has a whole note chord of G2, B2, and D3, while the lower staff has a whole note G2. The Clar. Sib (Clarinet in B-flat) staff has a whole rest followed by a quarter note G3, a quarter note F3, and a quarter note E3. The Vlins. (Violins) staff has a whole note G2, a whole note F2, and a whole note E2. The Cor Fa (Trumpet in F) staff has a whole rest. The Cui. (Cymbals) staff has a whole rest. The first Guit. (Guitar) staff has a whole note G2, a whole note F2, and a whole note E2. The second Guit. (Guitar) staff has a whole rest. The Bat. (Drum) staff has a complex rhythmic pattern with eighth notes and rests. The Bsn. (Bassoon) staff has a whole rest. The score is in 4/4 time and features a key signature of one flat (B-flat).



Cbs.

Synth.

Clar. Sib

Vlns.

Cor Fa

Cui.

Guit.

Guit.

Bat.

Bsn.

Cbs.

Synth.

Clar. Sib

Vlins.

Cor Fa

Cui.

Guit.

Guit.

Bat.

Bsn.

Detailed description of the musical score for page 33. The score consists of ten staves for different instruments. The top staff is for Cbs. (Contrabass) in bass clef, showing a whole note G2. The Synth. (Synthesizer) part is in grand staff (treble and bass clefs), with a whole note chord of G2, B1, and D2 in the bass and a whole note chord of G4, B4, and D5 in the treble. The Clar. Sib (Clarinet in Bb) is in treble clef with a whole note G4. The Vlins. (Violins) are in treble clef with a whole note G4. The Cor Fa (Cor Anglais) and Cui. (Cymbalist) are in treble clef with whole rests. The first Guit. (Guitar) is in treble clef with a whole rest, followed by a triplet of eighth notes (G4, A4, B4) starting at the second measure. The second Guit. (Guitar) is in treble clef with a whole rest. The Bat. (Bass Drum) is in a drum set notation with a snare drum, showing a rhythmic pattern of eighth notes and rests. The Bsn. (Bassoon) is in bass clef with a whole rest.

This musical score page, numbered 34, contains ten staves for various instruments. The instruments are: Cbs. (Cello), Synth. (Synthesizer), Clar. Sib (Clarinet in B-flat), Vlins. (Violins), Cor Fa (Cor Anglais), Cui. (Cui-bassoon), Guit. (Guitar), Guit. (Guitar), Bat. (Bass Drum), and Bsn. (Bassoon). The score is written in a key signature of one flat (B-flat) and a common time signature. The Cbs. staff begins with a whole note G2. The Synth. staff has a whole note chord of G2, B-flat2, and D3. The Clar. Sib staff has a whole rest. The Vlins. staff has a whole note chord of G2, B-flat2, and D3. The Cor Fa staff has a whole rest. The Cui. staff has a whole rest. The first Guit. staff has a whole rest, a tremolo mark, and a sixteenth note G4. The second Guit. staff has a whole rest. The Bat. staff has a complex rhythmic pattern with a drumstick icon and a sixteenth note G4. The Bsn. staff has a whole rest.

This musical score page, numbered 35, features ten staves for various instruments. The instruments are: Cbs. (Double Bass), Synth. (Synthesizer), Clar. Sib (Clarinet in B-flat), Vlins. (Violins), Cor Fa (Cor Anglais), Cui. (Cymbals), Guit. (Guitar), Guit. (Guitar), Bat. (Drum Set), and Bsn. (Bassoon). The score is written in a key signature of one flat (B-flat major or D minor) and a common time signature. The Cbs. staff begins with a whole note. The Synth. part consists of a sustained chord in the right hand and a single note in the left hand. The Clar. Sib part has a melodic line with rests. The Vlins. part has a sustained chord. The Cor Fa, Cui., and the first Guit. staff have rests. The second Guit. staff has a sustained chord. The Bat. part features a complex rhythmic pattern with cymbal and snare drum notation. The Bsn. part has a sustained note.

This musical score page, numbered 36, features ten staves for various instruments. The instruments are: Cbs. (Cello), Synth. (Synthesizer), Clar. Sib (Clarinet in B-flat), Vlins. (Violins), Cor Fa (Cor Anglais), Cui. (Cui-bassoon), Guit. (Guitar), Guit. (Guitar), Bat. (Bass Drum), and Bsn. (Bassoon). The score is written in a key signature of one flat (B-flat) and a common time signature. The Cbs. staff has a single whole note in the first measure. The Synth. staff has a complex chordal texture in the first measure. The Clar. Sib staff has a melodic line with eighth and quarter notes. The Vlins. staff has a simple harmonic accompaniment. The Cor Fa, Cui., and the first Guit. staff have rests in both measures. The second Guit. staff has a single whole note in the second measure. The Bat. staff has a complex rhythmic pattern with many sixteenth notes and rests. The Bsn. staff has a single whole note in the second measure.

Cbs.

Synth.

Clar. Sib

Vlins.

Cor Fa

Cui.

Guit.

Guit.

Bat.

Bsn.

Detailed description: This page of a musical score, numbered 38, contains ten staves for different instruments. The Cbs. (Cello) staff has a single note in the first measure. The Synth. (Synthesizer) part consists of two staves; the upper staff has a chord in the first measure, and the lower staff has a single note in the second measure. The Clar. Sib (Clarinet in B-flat) staff has a whole rest in the second measure. The Vlins. (Violins) staff has a single note in the first measure and another in the second. The Cor Fa (Cor Anglais) staff has a whole rest in the second measure. The Cui. (Cymbals) staff has a whole rest in the second measure. The Guit. (Guitar) staff has a single note in the first measure and another in the second. The second Guit. staff has a whole rest in the second measure. The Bat. (Bass Drum) staff has a complex rhythmic pattern in the first measure, followed by rests and notes in the subsequent measures. The Bsn. (Bassoon) staff has a whole rest in the second measure.

This musical score page, numbered 39, features ten staves for various instruments. The instruments are: Cbs. (Cello), Synth. (Synthesizer), Clar. Sib (Clarinet in Bb), Vlins. (Violins), Cor Fa (Cor Anglais), Cui. (Cymbals), Guit. (Guitar), Bat. (Bass Drum), and Bsn. (Bassoon). The score is written in a key signature of one flat (Bb) and a common time signature (C). The Cbs. staff begins with a whole rest. The Synth. part consists of two staves, each with a whole rest. The Clar. Sib part has a whole rest, followed by a dotted quarter note G4 and an eighth note A4. The Vlins. part has a whole rest. The Cor Fa part has a whole rest. The Cui. part has a whole rest. The Guit. part has a whole rest, followed by a quarter note G4, a half note A4, and a whole note B4. The Bat. part has a whole rest, followed by a quarter note G4, a quarter note A4, and a quarter note B4. The Bsn. part has a whole rest.

This musical score page, numbered 40, features ten staves for various instruments. The instruments are: Cbs. (Double Bass), Synth. (Synthesizer), Clar. Sib (Clarinete Sib), Vlins. (Violines), Cor Fa (Corno Fa), Cui. (Cuiabano), Guit. (Guitar), Guit. (Guitar), Bat. (Bateria), and Bsn. (Basson). The score is written in a key signature of one flat (B-flat) and a common time signature (C). The Cbs. staff begins with a whole note chord of G2 and B2. The Synth. staff has two staves, both with whole note chords of G4 and B4. The Clar. Sib staff has a melodic line starting with a quarter note G4, followed by a quarter note A4, and then a quarter note G4. The Vlins. staff has a whole note chord of G4 and B4. The Cor Fa staff has a whole note chord of G4 and B4. The Cui. staff has a whole note chord of G4 and B4. The Guit. staff has a melodic line starting with a quarter note G4, followed by a quarter note A4, and then a quarter note G4. The Guit. staff has a melodic line starting with a quarter note G4, followed by a quarter note A4, and then a quarter note G4. The Bat. staff has a rhythmic pattern of eighth notes and quarter notes. The Bsn. staff has a whole note chord of G4 and B4.

Cbs.

Synth.

Clar. Sib

Vlins.

Cor Fa

Cui.

Guit.

Guit.

Bat.

Bsn.

Detailed description: This page of a musical score, numbered 41, contains ten staves for various instruments. The Cbs. (Cello) staff has a single note in the first measure. The Synth. (Synthesizer) staff has two rests. The Clar. Sib (Clarinete Sib) staff has a single note in the first measure. The Vlins. (Violines) and Cor Fa (Corni Fa) staves have long, sustained notes. The Cui. (Cuiabano) staff has two rests. The two Guit. (Guitar) staves have complex, multi-measure passages with many notes and slurs. The Bat. (Bateria) staff has a complex rhythmic pattern with many notes and slurs. The Bsn. (Basson) staff has a few notes in the second and third measures.

This musical score page, numbered 43, features ten staves for various instruments. The instruments are: Cbs. (Cello), Synth. (Synthesizer), Clar. Sib (Clarinet in B-flat), Vlins. (Violins), Cor Fa (Cor Anglais), Cui. (Cymbals), Guit. (Guitar), Bat. (Bass Drum), and Bsn. (Bassoon). The score is written in a key signature of one flat (B-flat major or D minor) and a common time signature. The Cbs. staff begins with a whole note chord of B-flat and D. The Synth. staff has two staves, both with whole rests. The Clar. Sib staff has a melodic line starting with a whole rest, followed by quarter notes: B-flat, C, D, E, F, G, A, B-flat. The Vlins. staff has a whole note chord of B-flat and D, with a slur over it. The Cor Fa staff has a whole note chord of B-flat and D. The Cui. staff has two staves, both with whole rests. The Guit. staff has two staves. The top staff has a whole rest, followed by a quarter note G, then a quarter note chord of B-flat and D, and a quarter note chord of B-flat and D. The bottom staff has a whole rest, followed by a quarter note G, then a quarter note chord of B-flat and D, and a quarter note chord of B-flat and D. The Bat. staff has a complex rhythmic pattern with eighth notes and quarter notes, including accents and slurs. The Bsn. staff has a whole note chord of B-flat and D, with a slur over it.

This musical score page, numbered 45, features ten staves for various instruments. The instruments are: Cbs. (Cello), Synth. (Synthesizer), Clar. Sib (Clarinet in B-flat), Vlins. (Violins), Cor Fa (Cor Anglais), Cui. (Cui-bassoon), Guit. (Guitar), Bat. (Bass Drum), and Bsn. (Bassoon). The score is written in a key signature of one flat (B-flat major or D minor) and a common time signature. The Cbs. staff has a single whole note. The Synth. staff has two staves, each with a whole note. The Clar. Sib staff has a quarter note followed by a half note. The Vlins. staff has a whole note. The Cor Fa staff has a whole note. The Cui. staff has a whole note. The Guit. staff has a whole note. The Bat. staff has a complex rhythmic pattern with eighth notes and rests. The Bsn. staff has a whole note.

This musical score page, numbered 46, features ten staves for various instruments. The instruments are: Cbs. (Double Bass), Synth. (Synthesizer), Clar. Sib (Clarinet in B-flat), Vlins. (Violins), Cor Fa (Cor Anglais), Cui. (Cymbals), Guit. (Guitar), Bat. (Drum Set), and Bsn. (Bassoon). The score is written in a key signature of one flat (B-flat) and a common time signature (C). The Cbs. staff begins with a half note G2. The Synth. staff has two staves with rests. The Clar. Sib staff has a half note G4. The Vlins. staff has a half note G4. The Cor Fa staff has a half note G4. The Cui. staff has a half note G4. The Guit. staff has a half note G4. The Bat. staff has a half note G4. The Bsn. staff has a half note G2. The score continues with various musical notations, including beams, slurs, and dynamic markings.

This musical score page, numbered 48, features ten staves for various instruments. The instruments are: Cbs. (Double Bass), Synth. (Synthesizer), Clar. Sib (Clarinete Sib), Vlins. (Violines), Cor Fa (Corni Fa), Cui. (Corno), Guit. (Guitar), Guit. (Guitar), Bat. (Bateria), and Bsn. (Basson). The score includes a variety of musical notations such as notes, rests, slurs, and dynamic markings. A specific triplet of eighth notes is marked with a '3' in the second guitar staff. The bassoon staff shows a series of vertical lines, likely representing a tremolo or sustained notes. The clarinet staff has a key signature of one sharp (F#).

Musical score for page 49, featuring the following instruments and parts:

- Cbs. (Cello):** Bass clef, one note with a fermata.
- Synth. (Synthesizer):** Treble clef, two staves with sustained notes.
- Clar. Sib (Clarinete Sib):** Treble clef, one note with a fermata.
- Vlns. (Violines):** Treble clef, one note with a fermata.
- Cor Fa (Corni Fa):** Treble clef, one note with a fermata.
- Cui. (Corno):** Treble clef, one note with a fermata.
- Guit. (Guitar):** Treble clef, two staves with melodic lines.
- Bat. (Bateria):** Percussion clef, complex rhythmic patterns with accents.
- Bsn. (Basson):** Bass clef, one note with a fermata.

This musical score page, numbered 50, features ten staves for various instruments. The instruments are: Cbs. (Cello), Synth. (Synthesizer), Clar. Sib (Clarinet in B-flat), Vlins. (Violins), Cor Fa (Cornet in F), Cui. (Cymbals), Guit. (Guitar), Guit. (Guitar), Bat. (Bass Drum), and Bsn. (Bassoon). The score is written in a key signature of one flat (B-flat) and includes various musical notations such as notes, rests, and dynamic markings. The Cbs. staff begins with a double bar line and a fermata over a chord. The Synth. and Clar. Sib staves have rests. The Vlins. staff has a double bar line and a fermata over a chord. The Cor Fa staff has a quarter note followed by a half note. The Cui. staff has a quarter note followed by a half note. The Guit. staff has a quarter note followed by a half note. The Guit. staff has a quarter note followed by a half note. The Bat. staff has a double bar line and a fermata over a chord. The Bsn. staff has a double bar line and a fermata over a chord.

Musical score for page 51, featuring the following instruments and parts:

- Cbs. (Double Bass):** Bass clef, one note.
- Synth. (Synthesizer):** Treble clef, two staves with rests.
- Clar. Sib (Clarinete Sib):** Treble clef, one note.
- Vlins. (Violins):** Treble clef, sustained chord.
- Cor Fa (Corni Fa):** Treble clef, sustained chord.
- Cui. (Corno):** Treble clef, sustained chord.
- Guit. (Guitar 1):** Treble clef, melodic line.
- Guit. (Guitar 2):** Treble clef, sustained chord.
- Bat. (Bateria):** Percussion clef, rhythmic pattern.
- Bsn. (Bassoon):** Bass clef, sustained chord.

Cbs.

Synth.

Clar. Sib

Vlins.

Cor Fa

Cui.

Guit.

Guit.

Bat.

Bsn.

Detailed description: This page of a musical score, numbered 52, features ten staves for different instruments. The Cbs. (Cello) staff has a single bass clef with a whole note. The Synth. (Synthesizer) staff has two treble clefs, both with a flat key signature, and contains a whole rest. The Clar. Sib (Clarinet in B-flat) staff has a treble clef with a sharp key signature and contains a quarter note, a dotted quarter note, and another quarter note. The Vlins. (Violins) staff has a treble clef with a flat key signature and contains a whole note. The Cor Fa (Cor Anglais) staff has a treble clef with a flat key signature and contains a whole note. The Cui. (Cymbals) staff has a treble clef with a flat key signature and contains a whole rest. The Guit. (Guitar) staff has a treble clef with a flat key signature and contains a quarter note followed by a double bar line and a fermata. The second Guit. staff has a treble clef with a flat key signature and contains a whole rest. The Bat. (Bass Drum) staff has a double bar line and contains a series of rhythmic patterns including eighth notes, quarter notes, and eighth rests. The Bsn. (Bassoon) staff has a bass clef with a flat key signature and contains a whole rest.

This musical score page, numbered 53, features ten staves for different instruments. The Cbs. (Contra Bass) staff at the top has a long, sweeping line with a fermata. The Synth. (Synthesizer) staff consists of two staves with rests. The Clar. Sib (Clarinet in B-flat) has a single note. The Vlms. (Violins) and Cor Fa (Cor Anglais) have chords. The Cui. (Cymbals) has a chord. The Guit. (Guitars) have melodic lines. The Bat. (Bass Drum) has a complex rhythmic pattern with many notes and rests. The Bsn. (Bassoon) has a few notes. The score is written in a key with one flat and a 4/4 time signature.

This musical score page, numbered 55, features ten staves for different instruments. The instruments are: Cbs. (Cello), Synth. (Synthesizer), Clar. Sib (Clarinet in Bb), Vlins. (Violins), Cor Fa (Cor Anglais), Cui. (Cui-Bassoon), Guit. (Guitar), Bat. (Bass Drum), and Bsn. (Bassoon). The score is written in a key signature of one flat (Bb) and a common time signature (C). The Cbs. staff begins with a long, sustained note. The Synth. staff has two staves, both with a single note. The Clar. Sib staff has a single note. The Vlins. staff has a chord. The Cor Fa staff has a chord. The Cui. staff has a chord. The Guit. staff has a melodic line with a long note. The Bat. staff has a complex rhythmic pattern with many notes and rests. The Bsn. staff has a single note.

This musical score page, numbered 56, features ten staves for various instruments. The instruments are: Cbs. (Cello), Synth. (Synthesizer), Clar. Sib (Clarinet in B-flat), Vlins. (Violins), Cor Fa (Cor Anglais), Cui. (Cymbals), Guit. (Guitar), Guit. (Guitar), Bat. (Bass Drum), and Bsn. (Bassoon). The Cbs. staff begins with a double bar line and a fermata over a half note. The Synth. staff has two staves with a double bar line and a fermata over a half note. The Clar. Sib staff has a double bar line and a fermata over a half note. The Vlins. staff has a double bar line and a fermata over a half note. The Cor Fa staff has a double bar line and a fermata over a half note. The Cui. staff has a double bar line and a fermata over a half note. The Guit. staff has a double bar line and a fermata over a half note. The Guit. staff has a double bar line and a fermata over a half note. The Bat. staff has a double bar line and a fermata over a half note. The Bsn. staff has a double bar line and a fermata over a half note.

Cbs.

Synth.

Clar. Sib

Vlins.

Cor Fa

Cui.

Guit.

Guit.

Bat.

Bsn.

Detailed description: This page of a musical score, numbered 57, contains ten staves for different instruments. The Cbs. (Cello) staff at the top has a long, thin line indicating a sustained note. The Synth. (Synthesizer) staff has two staves with a few notes. The Clar. Sib (Clarinet in B-flat) staff has a long, thin line. The Vlins. (Violins) staff has a long, thin line. The Cor Fa (Cor Anglais) staff has a long, thin line. The Cui. (Cymbals) staff has a long, thin line. The Guit. (Guitar) staff has a long, thin line. The Bat. (Bass Drum) staff has a long, thin line. The Bsn. (Bassoon) staff has a long, thin line.

This musical score page, numbered 58, features ten staves for various instruments. The instruments are: Cbs. (Double Bass), Synth. (Synthesizer), Clar. Sib (Clarinet in B-flat), Vlns. (Violins), Cor Fa (Cor Anglais), Cui. (Cymbals), Guit. (Guitar), Guit. (Guitar), Bat. (Drum Set), and Bsn. (Bassoon). The score is written in a key signature of one flat (B-flat) and a common time signature. The Cbs. staff begins with a long note that spans across the first two measures. The Synth. staff has two staves, both with rests. The Clar. Sib staff has a few notes in the second measure. The Vlns. staff has a long note that spans across the first two measures. The Cor Fa staff has a long note that spans across the first two measures. The Cui. staff has a long note that spans across the first two measures. The Guit. staff has a few notes in the second measure. The Guit. staff has a long note that spans across the first two measures. The Bat. staff has a complex rhythmic pattern with many notes and rests. The Bsn. staff has a long note that spans across the first two measures.

This musical score page, numbered 60, features ten staves for various instruments. The instruments are: Cbs. (Cello), Synth. (Synthesizer), Clar. Sib (Clarinet in B-flat), Vlins. (Violins), Cor Fa (Cor Anglais), Cui. (Cymbals), Guit. (Guitar), Bat. (Bass Drum), and Bsn. (Bassoon). The score is written in a key signature of one flat (B-flat) and a common time signature (C). The Cbs. staff begins with a whole note chord in the first measure and a whole note chord in the second. The Synth. staff has rests in both measures. The Clar. Sib staff plays a melodic line starting with a dotted quarter note, followed by eighth notes, and a triplet of eighth notes in the first measure, ending with a whole note in the second. The Vlins. staff has a long, sweeping line with a fermata over the first measure and a similar line in the second. The Cor Fa, Cui., and Bsn. staves have rests in both measures. The Guit. staves play a complex rhythmic pattern with chords and single notes, including a triplet in the first measure. The Bat. staff plays a complex rhythmic pattern with eighth and sixteenth notes, including a triplet in the first measure.

This musical score page, numbered 62, features ten staves for various instruments. The instruments are: Cbs. (Cello), Synth. (Synthesizer), Clar. Sib (Clarinet in B-flat), Vlins. (Violins), Cor Fa (Cor Anglais), Cui. (Cymbals), Guit. (Guitar), Bat. (Bass Drum), and Bsn. (Bassoon). The Cbs. staff begins with a whole note chord. The Synth., Clar. Sib, Vlins., Cor Fa, and Cui. staves each have a whole note chord. The Vlins. staff includes a fermata and a hairpin. The Guit. staves feature a complex rhythmic pattern with a fermata. The Bat. staff shows a complex rhythmic pattern with various drum notations. The Bsn. staff has a whole note chord.

This musical score page, numbered 63, features ten staves for various instruments. The instruments are: Cbs. (Double Bass), Synth. (Synthesizer), Clar. Sib (Clarinet in B-flat), Vlins. (Violins), Cor Fa (Cor Anglais), Cui. (Cymbals), Guit. (Guitar), Guit. (Guitar), Bat. (Drum Set), and Bsn. (Bassoon). The score includes a variety of musical notations such as notes, rests, slurs, and dynamic markings. A specific notation '8' is present in the two guitar staves. A triplet bracket with the number '3' is located at the bottom of the page, spanning the first three measures of the Bassoon staff.

This musical score page, numbered 64, features ten staves for various instruments. The instruments are: Cbs. (Cello), Synth. (Synthesizer), Clar. Sib (Clarinet in B-flat), Vlins. (Violins), Cor Fa (Cor Anglais), Cui. (Cymbals), Guit. (Guitar), Bat. (Bass Drum), and Bsn. (Bassoon). The Cbs. staff has a whole note chord in the first measure. The Synth. staff has two whole notes in the first measure. The Clar. Sib staff has a quarter note in the first measure, followed by eighth notes in the second and third measures, and a quarter note in the fourth measure. The Vlins. staff has a complex chord in the first measure and a tremolo in the fourth measure. The Cor Fa and Cui. staves have whole notes in the first measure. The Guit. staves have chords in the first measure, with the second staff having a long sustain line. The Bat. staff has a complex rhythmic pattern with snare and cymbal hits. The Bsn. staff has a whole note chord in the first measure.

This musical score page, numbered 65, features ten staves for various instruments. The instruments are: Cbs. (Double Bass), Synth. (Synthesizer), Clar. Sib (Clarinet in B-flat), Vlns. (Violins), Cor Fa (Cor Anglais), Cui. (Cymbals), Guit. (Guitar), Bat. (Drum Set), and Bsn. (Bassoon). The score is written in a key signature of one flat (B-flat) and a common time signature (C). The Cbs. staff begins with a double bar line and a fermata over a half note. The Synth. staff has two staves with rests. The Clar. Sib staff has a quarter note followed by a half note. The Vlns. staff has a complex passage with a triplet of eighth notes. The Cor Fa staff has rests. The Cui. staff has rests. The Guit. staff has a melodic line with a fermata. The Bat. staff has a complex rhythmic pattern with many sixteenth notes and rests. The Bsn. staff has a melodic line with a fermata.

This musical score page, numbered 67, features ten staves for various instruments. The instruments and their parts are as follows:

- Cbs. (Cello):** A single note in the first measure, followed by a whole rest.
- Synth. (Synthesizer):** Two staves, both with whole rests throughout the measure.
- Clar. Sib (Clarinete Sib):** A melodic line starting with a quarter rest, followed by a quarter note, a dotted quarter note, and a quarter note.
- Vlins. (Violines):** A long, sweeping line representing a sustained string texture.
- Cor Fa (Corno Fa):** A whole rest.
- Cui. (Cuiabano):** A whole rest.
- Guit. (Guitar):** Two staves. The top staff shows a chord in the first measure, followed by a quarter note, a dotted quarter note, and a quarter note. The bottom staff shows a similar melodic line.
- Bat. (Bateria):** A complex rhythmic pattern with various drum notations, including snare, cymbal, and tom-tom sounds.
- Bsn. (Basson):** A whole rest.

This musical score page, numbered 68, features ten staves for various instruments. The instruments are: Cbs. (Cello), Synth. (Synthesizer), Clar. Sib (Clarinet in B-flat), Vlins. (Violins), Cor Fa (Cor Anglais), Cui. (Cymbals), Guit. (Guitar), Bat. (Bass Drum), and Bsn. (Bassoon). The score is written in a key signature of one flat (B-flat major or D minor) and a common time signature. The Cbs., Synth., and Bsn. staves have a whole note chord at the beginning of the measure. The Clar. Sib staff has a quarter note melody. The Vlins. staff has a sustained chord with a tremolo. The Cor Fa staff has a whole note chord. The Cui. staff has a whole note chord. The Guit. staves have a sustained chord with a tremolo. The Bat. staff has a complex rhythmic pattern with various drum notations. The Bsn. staff has a whole note chord.

This musical score page, numbered 69, features ten staves for various instruments. The instruments are: Cbs. (Cello), Synth. (Synthesizer), Clar. Sib (Clarinet in B-flat), Vlins. (Violins), Cor Fa (Cor Anglais), Cui. (Cymbals), Guit. (Guitars), Bat. (Bass Drum), and Bsn. (Bassoon). The score is written in a key signature of one flat (B-flat) and a common time signature (C). The Cbs., Synth., Clar. Sib, and Bsn. staves each contain a single whole note chord at the beginning of the measure. The Vlins. staff begins with a complex figure-eight pattern. The Guit. staves feature a rhythmic pattern of eighth notes and chords. The Bat. staff shows a complex drum pattern with various rhythmic values and accents. The Cui. staff is empty.

Cbs.

Synth.

Clar. Sib

Vlins.

Cor Fa

Cui.

Guit.

Guit.

Bat.

Bsn.

Detailed description: This page of a musical score, numbered 70, contains ten staves for different instruments. The Cbs. (Double Bass) staff begins with a bass clef, a key signature of one flat, and a 7-measure rest. The Synth. (Synthesizer) staff has two treble clefs, a key signature of one flat, and rests in both staves. The Clar. Sib (Clarinet in B-flat) staff has a treble clef, a key signature of one flat, and rests in the first measure, followed by a melodic line in the second measure. The Vlins. (Violins) staff has a treble clef, a key signature of one flat, and rests in both measures. The Cor Fa (Cor Anglais) staff has a treble clef, a key signature of one flat, and rests in both measures. The Cui. (Cymbals) staff has a bass clef, a key signature of one flat, and rests in both measures. The two Guit. (Guitar) staves have treble clefs, a key signature of one flat, and contain melodic lines with slurs and accents. The Bat. (Bass Drum) staff has a double bar line at the start, followed by a complex rhythmic pattern with stems and beams. The Bsn. (Bassoon) staff has a bass clef, a key signature of one flat, and rests in both measures.

This musical score page, numbered 72, contains ten staves for various instruments. The instruments listed on the left are Cbs., Synth., Clar. Sib, Vlins., Cor Fa, Cui., Guit., Bat., and Bsn. The score is divided into two measures. The Cbs. staff shows a low note in the first measure and a higher note in the second. The Synth. staff has rests in both measures. The Clar. Sib staff has a melodic line starting with a sharp sign. The Vlins. staff has a chord in the first measure and a long, tapering line in the second. The Cor Fa staff has a long note in the first measure and a chord in the second. The Cui. staff has a low note in the first measure and a melodic line in the second. The Guit. staff has a complex melodic line with many notes and slurs. The Bat. staff has a rhythmic pattern with many notes and rests. The Bsn. staff has rests in both measures.

This musical score page, numbered 74, contains ten staves for various instruments. The instruments listed on the left are Cbs. (Double Bass), Synth. (Synthesizer), Clar. Sib (Clarinet in Bb), Vlins. (Violins), Cor Fa (Cor Anglais), Cui. (Cymbals), Guit. (Guitar), Bat. (Drum Set), and Bsn. (Bassoon). The score is written in a key signature of one flat (Bb) and a common time signature (C). The Cbs. staff begins with a whole note chord. The Synth. and Clar. Sib staves have whole note chords. The Vlins. staff has a whole note chord with a fermata. The Cor Fa staff has a whole note chord with a fermata. The Cui. staff has a whole note chord with a fermata. The first Guit. staff has a complex rhythmic pattern with a triplet of eighth notes and a fermata. The second Guit. staff has a whole note chord with a fermata. The Bat. staff has a complex rhythmic pattern with various drum notations. The Bsn. staff has a whole note chord with a fermata.

Cbs. b
 Synth. b
 Clar. Sib #
 Vlins. b
 Cor Fa b
 Cui.
 Guit. b
 Guit. b
 Bat.
 Bsn. b

Musical score for page 75, featuring various instruments including Cbs., Synth., Clar. Sib, Vlins., Cor Fa, Cui., Guit., Bat., and Bsn. The score includes musical notation such as treble and bass clefs, key signatures, and specific performance instructions like triplets and slurs.

This musical score page, numbered 76, features ten staves for different instruments. The instruments are: Cbs. (Cello), Synth. (Synthesizer), Clar. Sib (Clarinet in B-flat), Vlns. (Violins), Cor Fa (Cor Anglais), Cui. (Cymbals), Guit. (Guitar), Bat. (Bass Drum), and Bsn. (Bassoon). The score is written in a key signature of one flat (B-flat) and a common time signature (C). The Cbs. part begins with a half note G2. The Synth. part has a melodic line with a triplet of eighth notes in the final measure. The Vlns. part has a long, sustained note with a fermata. The Clar. Sib part has a whole rest. The Cor Fa part has a half note G4. The Cui. part has a whole rest. The Guit. parts have various rhythmic patterns, including eighth notes and chords. The Bat. part has a complex rhythmic pattern with many sixteenth notes. The Bsn. part has a whole rest.

77

Cbs.

Synth.

Clar. Sib

Vlins.

Cor Fa

Cui.

Guit.

Guit.

Bat.

Bsn.

Detailed description: This page of a musical score, numbered 77, contains ten staves for different instruments. The Cbs. (Contra Bass) staff begins with a double bar line, a key signature change to one flat, and a measure containing a whole note chord. The Synth. (Synthesizer) part consists of two staves, both of which are silent, indicated by a large bracket and a horizontal line. The Clar. Sib (Clarinete Sib) staff has a key signature of one sharp and contains a melodic line with eighth and quarter notes. The Vlins. (Violins) staff shows a multi-measure rest for the first measure, followed by a long, sweeping line that spans across the second measure, indicating a sustained or glissando effect. The Cor Fa (Coro Fa), Cui. (Cui), and Guit. (Guitar) staves are all silent, marked with a horizontal line and a double bar line. The Bat. (Bateria) staff features a complex rhythmic pattern with various note values, rests, and accents. The Bsn. (Basson) staff is silent, marked with a horizontal line and a double bar line.

This musical score page, numbered 79, features ten staves for different instruments. The instruments are: Cbs. (Cello), Synth. (Synthesizer), Clar. Sib (Clarinet in Bb), Vlns. (Violins), Cor Fa (Cor Anglais), Cui. (Cui-Bassoon), Guit. (Guitar), Bat. (Bass Drum), and Bsn. (Bassoon). The score is written in a key signature of one flat (Bb) and a common time signature (C). The Cbs. staff begins with a fermata over a whole note. The Synth. staff has two staves with rests. The Clar. Sib staff has a whole note with a sharp sign. The Vlns. staff has a complex melodic line with a triplet of eighth notes at the end. The Cor Fa, Cui., and Guit. staves have rests. The Bat. staff has a rhythmic pattern with eighth notes and rests. The Bsn. staff has a melodic line with eighth notes and rests. There are dynamic markings like *mf* and *f* at the top of the page.

This musical score page, numbered 81, features ten staves for various instruments. The instruments are: Cbs. (Double Bass), Synth. (Synthesizer), Clar. Sib (Clarinete Sib), Vlns. (Violines), Cor Fa (Corno Fa), Cui. (Cuiabano), Guit. (Guitar), Guit. (Guitar), Bat. (Bateria), and Bsn. (Basson). The score includes musical notation such as notes, rests, and dynamic markings. A prominent feature is a long, sweeping hairpin crescendo that spans across the Vlns. staff and extends upwards, affecting the dynamics of the Cbs., Synth., Cor Fa, Cui., and Guit. staves. The Clar. Sib staff shows a melodic line with various articulations. The Bat. staff features rhythmic patterns with accents and dynamic markings. The Bsn. staff has a few notes at the beginning of the page.

This musical score page, numbered 82, features ten staves for various instruments. The instruments are: Cbs. (Cello), Synth. (Synthesizer), Clar. Sib (Clarinet in B-flat), Vlins. (Violins), Cor Fa (Cor Anglais), Cui. (Cymbals), Guit. (Guitar), Guit. (Guitar), Bat. (Bass Drum), and Bsn. (Bassoon). The Cbs. staff has a whole note chord in the first measure. The Synth. staff has a whole note chord in the second measure. The Clar. Sib staff has a melodic line starting in the first measure. The Vlins. staff has a complex melodic line with many notes and slurs. The Cor Fa staff has a whole note chord in the first measure. The Cui. staff has a whole note chord in the second measure. The Guit. staff has a whole note chord in the second measure. The Guit. staff has a whole note chord in the second measure. The Bat. staff has a complex rhythmic pattern with many notes and slurs. The Bsn. staff has a whole note chord in the first measure.

This musical score page, numbered 83, features ten staves for different instruments. The instruments are: Cbs. (Cello), Synth. (Synthesizer), Clar. Sib (Clarinet in Bb), Vlins. (Violins), Cor Fa (Cor Anglais), Cui. (Cymbals), Guit. (Guitar), Bat. (Bass Drum), and Bsn. (Bassoon). The Cbs. staff begins with a whole note chord in the bass clef. The Synth. staff has two staves with whole note chords. The Clar. Sib staff has two quarter notes. The Vlins. staff has a long, sweeping line with a fermata. The Cor Fa staff has a whole note chord. The Cui., Guit., and Bsn. staves have whole note chords. The Bat. staff has a complex rhythmic pattern with various drum notations.

This musical score page, numbered 84, features ten staves for various instruments. The instruments listed on the left are Cbs. (Cello), Synth. (Synthesizer), Clar. Sib (Clarinet in B-flat), Vlns. (Violins), Cor Fa (Cor Anglais), Cui. (Cymbals), Guit. (Guitar), Guit. (Guitar), Bat. (Bass Drum), and Bsn. (Bassoon). The Cbs. staff begins with a whole note G2. The Synth. and Clar. Sib staves have whole rests. The Vlns. staff has a melodic line starting with a sharp sign and a whole note. The Cor Fa staff has a whole note G4. The Cui., Guit., and Bsn. staves have whole rests. The Bat. staff has a complex rhythmic pattern with many sixteenth notes and rests.

Musical score for page 85, featuring the following instruments and parts:

- Cbs. (Cello):** Bass clef, B-flat key signature. Two whole notes on the first staff.
- Synth. (Synthesizer):** Treble clef, B-flat key signature. Two staves, each with a whole rest.
- Clar. Sib (Clarinete Sib):** Treble clef, A key signature. A melodic line with eighth notes and slurs.
- Vlns. (Violines):** Treble clef, B-flat key signature. A melodic line with slurs and a fermata.
- Cor Fa (Corni Fa):** Treble clef, B-flat key signature. A whole note chord marked with a fermata.
- Cui. (Corno):** Treble clef, B-flat key signature. A whole rest.
- Guit. (Guitar):** Treble clef, B-flat key signature. A whole rest.
- Guit. (Guitar):** Treble clef, B-flat key signature. A whole rest.
- Bat. (Bateria):** Percussion clef. A complex rhythmic pattern with eighth notes and rests.
- Bsn. (Basson):** Bass clef, B-flat key signature. A whole rest.

This musical score page, numbered 86, features a key signature of one flat (B-flat) and a common time signature. The instruments and their parts are as follows:

- Cbs. (Cello):** Starts with a whole note chord of G2 and B2, followed by a half note G2.
- Synth. (Synthesizer):** Two staves, both containing whole note chords of G2 and B2.
- Clar. Sib (Clarinete Sib):** A melodic line starting with a quarter note G4, followed by quarter notes A4, B4, and G4.
- Vlns. (Violins):** A sustained whole note chord of G2 and B2.
- Cor Fa (Corno Fa):** A sustained whole note chord of G2 and B2.
- Cui. (Cuiabano):** A sustained whole note chord of G2 and B2.
- Guit. (Guitar):** Two staves, both containing sustained whole note chords of G2 and B2.
- Bat. (Bateria):** A complex rhythmic pattern with various drum notations, including snare, cymbal, and tom-tom sounds.
- Bsn. (Basson):** A sustained whole note chord of G2 and B2.

This musical score page, numbered 87, features ten staves for various instruments. The instruments listed on the left are Cbs. (Double Bass), Synth. (Synthesizer), Clar. Sib (Clarinet in B-flat), Vlns. (Violins), Cor Fa (Cor Anglais), Cui. (Cymbals), Guit. (Guitar), Bat. (Drum Set), and Bsn. (Bassoon). The Cbs. staff begins with a whole note G2. The Synth. staff has two staves, both with whole notes G4. The Clar. Sib staff has a whole note G4. The Vlns. staff has a whole note chord of G2, B2, D3, and E3. The Cor Fa staff has a whole note chord of G2, B2, and D3. The Cui. staff has a whole note G2. The Guit. staff has two staves, both with whole notes G4. The Bat. staff has a complex rhythmic pattern with various notes and rests. The Bsn. staff has a whole note G2.

This musical score page, numbered 88, features ten staves for various instruments. The instruments are: Cbs. (Cello), Synth. (Synthesizer), Clar. Sib (Clarinet in B-flat), Vlns. (Violins), Cor Fa (Cor Anglais), Cui. (Cymbals), Guit. (Guitar), Bat. (Bass Drum), and Bsn. (Bassoon). The Cbs. staff begins with a whole note G2. The Synth. and Clar. Sib staves have whole rests. The Vlns. staff has a melodic line starting with a grace note on G4, followed by a series of notes with slurs and ties. The Cor Fa staff has a whole rest. The Cui. staff has a whole rest. The Guit. staves have whole rests. The Bat. staff has a complex rhythmic pattern with various drum notations. The Bsn. staff has a whole rest.

Musical score for page 89, featuring the following instruments and parts:

- Cbs. (Double Bass):** Bass clef, one note.
- Synth. (Synthesizer):** Treble clef, two staves, each with a whole note chord.
- Clar. Sib (Clarinete Sib):** Treble clef, key signature of one sharp (F#), melodic line with various articulations.
- Vlins. (Violines):** Treble clef, multiple staves with a long, tapering line.
- Cor Fa (Corno Fa):** Treble clef, multiple staves with a long, tapering line.
- Cui. (Corno):** Bass clef, one note.
- Guit. (Guitar):** Treble clef, two staves, each with a whole note chord.
- Bat. (Bateria):** Percussion clef, rhythmic notation with various patterns.
- Bsn. (Basson):** Bass clef, one note.

Cbs.

Synth.

Clar. Sib

Vlins.

Cor Fa

Cui.

Guit.

Guit.

Bat.

Bsn.

Detailed description: This page of a musical score, numbered 90, contains ten staves for different instruments. The Cbs. (Double Bass) staff begins with a bass clef, a key signature of one flat, and a 7-measure rest followed by a half note. The Synth. (Synthesizer) staff has two treble clefs, a key signature of one flat, and two whole notes. The Clar. Sib (Clarinete Sib) staff has a treble clef, a key signature of one sharp, and a sequence of notes including a quarter note, eighth notes, and a half note. The Vlins. (Violins) staff has a treble clef, a key signature of one flat, and a whole note chord. The Cor Fa (Corni Fa) staff has a treble clef, a key signature of one flat, and a whole note chord. The Cui. (Corno) staff has a bass clef, a key signature of one flat, and a whole note chord. The Guit. (Guitar) staff has a treble clef, a key signature of one flat, and a whole note chord. The second Guit. staff has a treble clef, a key signature of one flat, and a whole note chord. The Bat. (Bateria) staff has a double bar line and includes various rhythmic symbols like eighth notes and rests. The Bsn. (Basson) staff has a bass clef, a key signature of one flat, and a whole note chord.

This musical score page, numbered 91, features ten staves for different instruments. The instruments are: Cbs. (Double Bass), Synth. (Synthesizer), Clar. Sib (Clarinet in B-flat), Vlins. (Violins), Cor Fa (Cor Anglais), Cui. (Cymbals), Guit. (Guitar), Bat. (Bass Drum), and Bsn. (Bassoon). The score is written in a key signature of one flat (B-flat major or D minor) and a common time signature. The Cbs. staff begins with a whole note followed by a fermata. The Synth. staff has two staves with whole notes and fermatas. The Clar. Sib staff has a quarter note followed by a half note with a fermata. The Vlins. staff has a complex rhythmic pattern of eighth and sixteenth notes. The Cor Fa staff has a whole note with a fermata. The Cui. staff has a whole note with a fermata. The Guit. staff has two staves with whole notes and fermatas. The Bat. staff has a complex rhythmic pattern of eighth and sixteenth notes. The Bsn. staff has a whole note with a fermata.

This musical score page, numbered 92, features ten staves for various instruments. The instruments are: Cbs. (Cello), Synth. (Synthesizer), Clar. Sib (Clarinete Sib), Vlins. (Violines), Cor Fa (Corni Fa), Cui. (Cuiabano), Guit. (Guitar), Guit. (Guitar), Bat. (Bateria), and Bsn. (Basson). The score is written in a key signature of one flat (B-flat) and includes various musical notations such as notes, rests, and dynamic markings. The Cbs., Clar. Sib, Cui., and Bsn. staves show melodic lines with some rests. The Synth. and Cor Fa staves have block chords. The Vlins. staff features a complex, multi-measure passage with many notes. The Bat. staff has a rhythmic pattern with many notes and rests. The Guit. staves have block chords. The Bsn. staff has a melodic line with many notes and rests.

This musical score page, numbered 93, features ten staves for different instruments. The instruments are: Cbs. (Cello), Synth. (Synthesizer), Clar. Sib (Clarinet in B-flat), Vlins. (Violins), Cor Fa (Cor Anglais), Cui. (Cymbals), Guit. (Guitar), Bat. (Bass Drum), and Bsn. (Bassoon). The Cbs., Synth., Clar. Sib, Cui., Guit., and Bsn. staves each contain a single whole note chord at the beginning of the measure. The Vlins. staff shows a complex texture with multiple voices and a large bracketed section. The Cor Fa staff contains a single whole note chord. The Bat. staff features a complex rhythmic pattern with various drum notations, including snare, cymbal, and tom-tom sounds, with some notes marked with 'x' for cymbal effects.

Cbs. b \#

Synth. b

Clar. Sib \#

Vlins. b \#

Cor Fa b

Cui. b \#

Guit. b

Guit. b

Bat. H

Bsn. b

This musical score page, numbered 95, features ten staves for various instruments. The Cbs. (Double Bass) staff begins with a whole note G2 in the first measure and a dotted quarter note G2 in the second. The Synth. (Synthesizer) staff has two staves, both with whole rests in both measures. The Clar. Sib (Clarinet in B-flat) staff has a whole rest in the first measure, followed by a triplet of eighth notes (F#4, G4, A4) in the second measure, and a dotted quarter note G4 in the third. The Vlins. (Violins) staff has a whole note chord (F#4, G4, A4) in the first measure, which is sustained through the second measure. The Cor Fa (Cor Anglais) staff has a whole note chord (F#4, G4, A4) in the first measure, which is sustained through the second measure. The Cui. (Cymbals) staff has a whole note G2 in the first measure and a whole note G2 in the second. The Guit. (Guitar) staff has two staves, both with whole rests in both measures. The Bat. (Drum) staff has a pattern of eighth notes and rests, including a triplet of eighth notes in the second measure. The Bsn. (Bassoon) staff has a whole rest in both measures.

Cbs.

Synth.

Clar. Sib

Vlins.

Cor Fa

Cui.

Guit.

Guit.

Bat.

Bsn.

Detailed description: This page of a musical score, numbered 97, features ten staves for different instruments. The Cbs. (Cello) staff has a single whole note. The Synth. (Synthesizer) staff has two whole notes. The Clar. Sib (Clarinet in B-flat) staff has a single whole note. The Vlins. (Violins) staff has a melodic line with slurs and accents. The Cor Fa (Cor Anglais) staff has a single whole note. The Cui. (Cymbals) staff has a single whole note. The Guit. (Guitar) staffs have two whole notes. The Bat. (Bass Drum) staff has a complex rhythmic pattern with various note values and rests. The Bsn. (Bassoon) staff has a single whole note.

Cbs.

Synth.

Clar. Sib

Vlns.

Cor Fa

Cui.

Guit.

Guit.

Bat.

Bsn.

Detailed description: This page of a musical score, numbered 98, contains ten staves for different instruments. The Cbs. (Cello) staff begins with a half note G2, followed by a half note F2, and a half note E2. The Synth. (Synthesizer) staff has two measures with a whole rest. The Clar. Sib (Clarinet in B-flat) staff has two measures with a whole rest, followed by three eighth notes G4, F4, and E4. The Vlns. (Violins) staff features a melodic line with eighth notes and a slur. The Cor Fa (Cor Anglais) staff has two measures with a whole rest. The Cui. (Cymbals) staff has two measures with a whole rest. The Guit. (Guitar) staff has two measures with a whole rest. The second Guit. staff has two measures with a whole rest. The Bat. (Bass Drum) staff has two measures with a complex rhythmic pattern of eighth notes and rests. The Bsn. (Bassoon) staff has two measures with a whole rest.

This musical score page, numbered 100, features ten staves for various instruments. The instruments are: Cbs. (Double Bass), Synth. (Synthesizer), Clar. Sib (Clarinet in B-flat), Vlins. (Violins), Cor Fa (Cor Anglais), Cui. (Cymbals), Guit. (Guitar), Guit. (Guitar), Bat. (Bass Drum), and Bsn. (Bassoon). The score is written in a key signature of one flat (B-flat) and a common time signature. The Cbs. staff begins with a whole note G2. The Synth. staff has a whole rest followed by a melodic line starting at measure 100. The Clar. Sib staff plays a sequence of notes: G4, F#4, E4, D4. The Vlins. staff plays a sustained chord of G#4 and B4. The Cor Fa staff plays a sustained chord of G4 and B4. The Cui. staff has a whole note G2. The two Guit. staves have whole rests. The Bat. staff has a complex rhythmic pattern with many sixteenth notes and rests. The Bsn. staff has a whole rest.

This musical score page, numbered 101, features ten staves for various instruments. The Cbs. (Double Bass) staff begins with a whole note chord in the key of B-flat major, which changes to a whole note chord in the key of B major in the second measure. The Synth. (Synthesizer) staff consists of two treble clef staves with whole rests in both measures. The Clar. Sib (Soprano Clarinet) staff plays a melodic line starting with a quarter note G4, followed by eighth notes A4, B4, and C5, then a quarter rest, and continues with eighth notes D5, E5, and F5, ending with a quarter note G5. The Vlns. (Violins) staff shows a sustained chord in the key of B-flat major, with a fermata over the notes in the second measure. The Cor Fa (French Horn) staff has whole rests in both measures. The Cui. (Cymbals) staff has a whole note chord in the key of B-flat major in the first measure, changing to a whole note chord in the key of B major in the second measure. The Guit. (Guitar) staff consists of two treble clef staves with whole rests in both measures. The Bat. (Drum) staff features a complex rhythmic pattern with various drum notations, including snare, hi-hat, and cymbal sounds, with some notes marked with 'x' for cymbals. The Bsn. (Bassoon) staff has whole rests in the first measure and a melodic line in the second measure, starting with a quarter note G2 and continuing with eighth notes A2, B2, and C3.

This musical score page, numbered 103, features ten staves for various instruments. The instruments are: Cbs. (Double Bass), Synth. (Synthesizer), Clar. Sib (Clarinet in B-flat), Vlns. (Violins), Cor Fa (Cor Anglais), Cui. (Cymbals), Guit. (Guitar), Bat. (Bass Drum), and Bsn. (Bassoon). The score is written in a key signature of one flat (B-flat) and a common time signature. The Cbs. part begins with a whole rest followed by a dotted quarter note. The Synth. part has a whole rest followed by a quarter rest, then a melodic line of eighth notes. The Clar. Sib part has a whole rest. The Vlns. part has a half note with a fermata. The Cor Fa part has a half note with a fermata. The Cui. part has a whole rest. The Guit. parts have whole rests. The Bat. part has a complex rhythmic pattern with eighth and sixteenth notes. The Bsn. part has a whole rest.

Musical score for page 104, featuring the following instruments and parts:

- Cbs. (Cello):** Bass clef, two measures with whole notes.
- Synth. (Synthesizer):** Treble clef, two measures with whole rests.
- Clar. Sib (Clarinete Sib):** Treble clef, key signature of one sharp (F#), two measures with whole rests.
- Vlns. (Violines):** Treble clef, two measures with whole notes.
- Cor Fa (Corni Fa):** Treble clef, key signature of one flat (Bb), two measures with whole notes.
- Cui. (Corno):** Bass clef, two measures with whole notes.
- Guit. (Guitar):** Treble clef, two measures with whole rests.
- Bat. (Bateria):** Percussion clef, two measures with complex rhythmic patterns including eighth and sixteenth notes, and rests.
- Bsn. (Basson):** Bass clef, two measures with whole notes.

A triplet bracket is present under the Bsn. staff in the second measure.

This musical score page, numbered 106, features ten staves for various instruments. The instruments are: Cbs. (Double Bass), Synth. (Synthesizer), Clar. Sib (Clarinet in B-flat), Vlns. (Violins), Cor Fa (Cor Anglais), Cui. (Cymbals), Guit. (Guitar), Bat. (Bass Drum), and Bsn. (Bassoon). The score is written in a key signature of one flat (B-flat major or D minor) and a common time signature. The Cbs. staff begins with a half note G2. The Synth. staff has two staves with rests. The Clar. Sib staff has a melodic line starting with a quarter note G4. The Vlns. staff has a complex rhythmic pattern with many beamed notes. The Cor Fa staff has a half note G4. The Cui. staff has rests. The Guit. staff has a melodic line starting with a quarter note G4. The Bat. staff has a complex rhythmic pattern with many beamed notes. The Bsn. staff has rests.

This musical score page, numbered 108, features ten staves for various instruments. The Cbs. (Double Bass) staff begins with a key signature of one sharp (F#) and a bass clef, playing a sequence of notes: F#2, G2, A2, B2, C3, D3, E3, F3, G3, A3. The Synth. (Synthesizer) staff consists of two treble clef staves, both of which are mostly silent with a few rests. The Clar. Sib (Clarinet in Bb) staff is also mostly silent. The Vlins. (Violins) staff, in a treble clef with a key signature of one flat (Bb), plays a melodic line with eighth and sixteenth notes. The Cor Fa (Trumpet in F) staff is silent. The Cui. (Cymbals) staff is silent. The Guit. (Guitar) staff has two parts: the upper part is a treble clef staff with a melodic line, and the lower part is a guitar-specific notation staff with chords and rhythmic markings. The Bat. (Drum) staff shows a complex rhythmic pattern with various drum symbols and rests. The Bsn. (Bassoon) staff is silent.

This musical score page, numbered 111, features ten staves for various instruments. The instruments are: Cbs. (Cello), Synth. (Synthesizer), Clar. Sib (Clarinet in B-flat), Vlins. (Violins), Cor Fa (Cor Anglais), Cui. (Cymbals), Guit. (Guitar), Bat. (Bass Drum), and Bsn. (Bassoon). The score is written in a key signature of one flat (B-flat) and a common time signature. The Cbs. staff begins with a triplet of eighth notes. The Synth. staff has two staves with rests. The Clar. Sib staff has rests. The Vlins. staff has a melodic line with slurs. The Cor Fa staff has rests. The Cui. staff has rests. The Guit. staff has two staves with melodic and harmonic lines. The Bat. staff has a complex rhythmic pattern with many rests. The Bsn. staff has rests.

Cbs.

Synth.

Clar. Sib

Vlins.

Cor Fa

Cui.

Guit.

Guit.

Bat.

Bsn.

Detailed description: This page of a musical score, numbered 114, contains ten staves for different instruments. From top to bottom: 1. Cbs. (Double Bass): Bass clef, one note with a slur and a fermata. 2. Synth. (Synthesizer): Treble clef, one note with a fermata. 3. Clar. Sib (Clarinete Sib): Treble clef, one note with a fermata. 4. Vlins. (Violines): Treble clef, two notes with a slur and a fermata. 5. Cor Fa (Corni Fa): Treble clef, one note with a fermata. 6. Cui. (Corno): Bass clef, one note with a fermata. 7. Guit. (Guitar): Treble clef, one note with a fermata. 8. Guit. (Guitar): Treble clef, two notes with a slur and a fermata. 9. Bat. (Batería): Percussion clef, one note with a fermata. 10. Bsn. (Bajon): Bass clef, one note with a fermata. All staves have a key signature of one flat (B-flat).